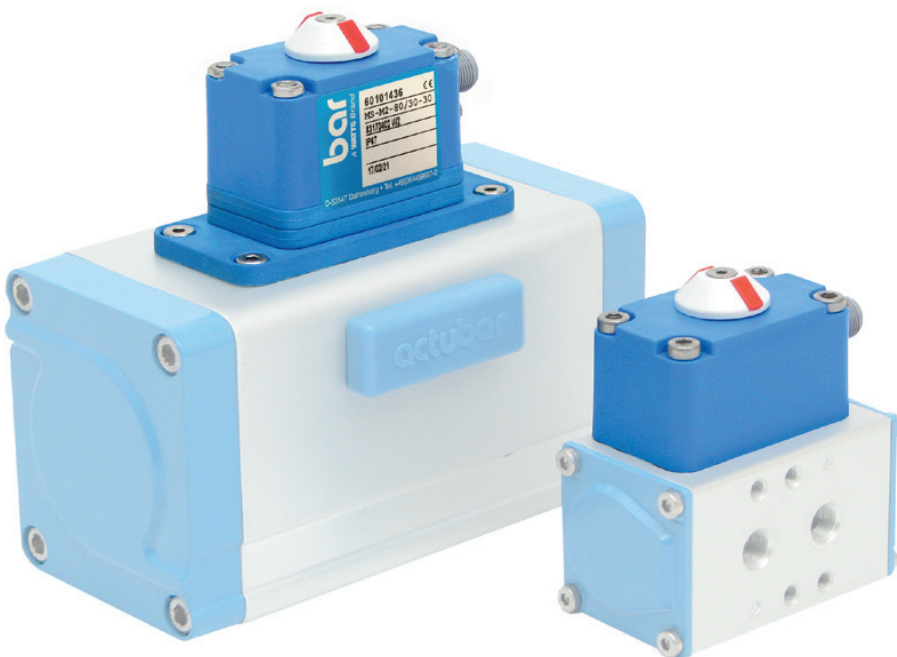
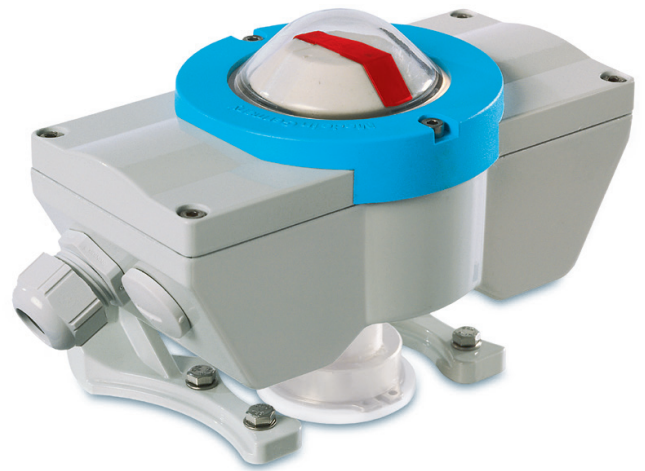


CR-TEC Engineering

Automated Valve Solutions

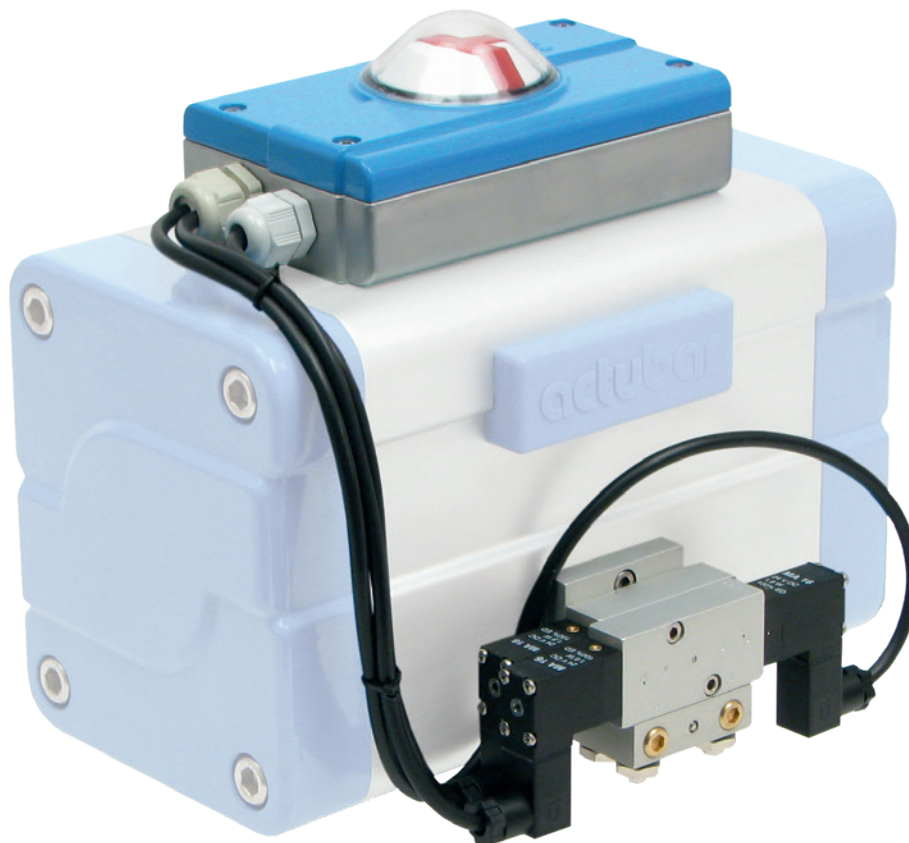
Pneumatic Rotary Actuator Accessories



positurn2

Electro-Pneumatic Positioner & 3-Position Control

- Assembly to all actuators with interfaces according to VDI/VDE 3845 (NAMUR)
- Visual position indication with indicator and LED
- Direct solenoid valve assembly, easy to mount and no additional hoses or pipework required.
- Mode selection (Posi or 3-position)
- Signal type selection (4-20mA or 0-10V)
- Integrated speed regulation, opening and closing speeds can be adjusted independently.
- Manual Operation in case of voltage/signal loss
- Pivoting angle 0° to 180°
- Output signals open/closed as well as position feedback fitted as standard
- Three safety variations
 - Single-acting
 - Double-acting normally open / normally closed
 - Double-acting fail to stay
- Simple Self-Calibration
- No air consumption in steady state condition, the valve remains locked in position
- Wear-free optical measurement of rotation angle



posiswitch

Opto-Electric Position Indicator

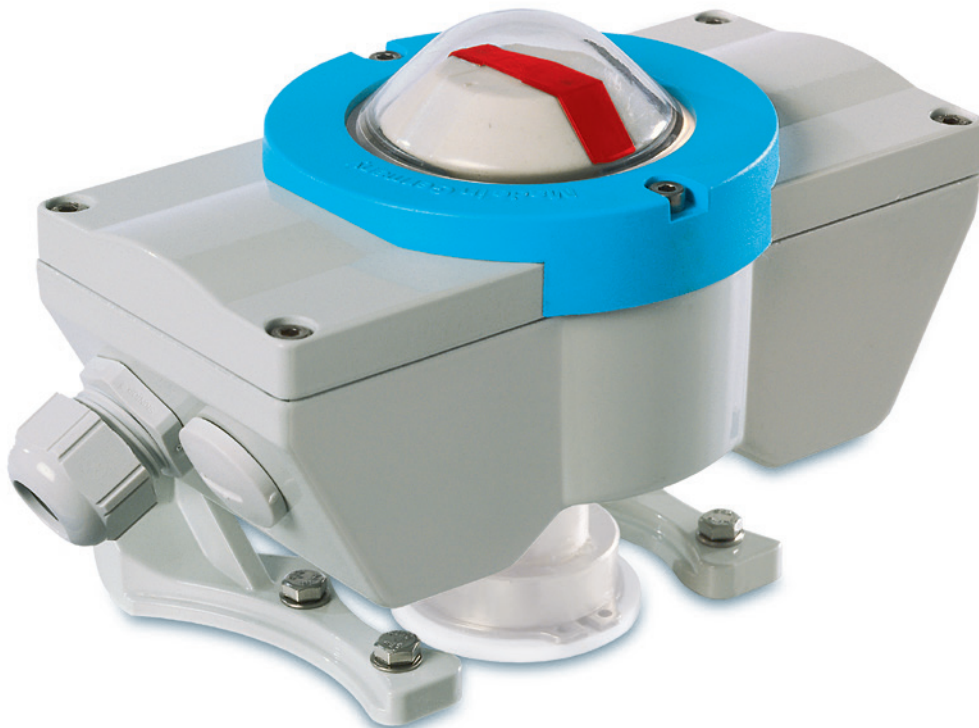
- Up to 4 cable glands
- Available in 2 different types of switch
- Self Adjusting switch points for both end positions
- Protected and clearly visible position indicator, adjustable for 2-way- and 3-way-valves
- Robust construction with an aluminium diecast-casing
- Flexible modular design
- All components are made from either corrosion-resistant or corrosion-protected materials
- Optionally with pressure-balance device to avoid emergence of condensation water at extreme climatic conditions
- Applicable for all interfaces according to VDI/VDE 3845



switchcontrol

Opto-Electric Position Indicator

- Clearly visible position display for the OPEN/CLOSED position and also the flow path
- ATEX-compliant design via NAMUR switch and special coating of the plastic components
- Easy and fast adjustment of the switch points
- Available in various switching configurations
- Robust construction: Aluminium die-cast casing
- Optional version with climatic valve to avoid condensed water inside casing
- Up to four cable entries possible
- Easy access to driving pinion
- Adjustable heights of 20, 30, 40, and 50mm to accommodate different pinions
- Universal mounting to units with NAMUR size 80 & 130 with adjustable feet
- Precision-bearing on driven shaft
- Easy removal of the complete camshaft from the casing
- All components made from corrosion-resistant or corrosion-protected materials



miniswitch

Opto-Electric Position Indicator

- The optimum solution for the smallest of actuators
- Available for mounting sizes 50 x 25 mm and 80 x 30 mm with extensions 15, 20 and 30 mm
- Available for mechanical and inductive switches
- Self-setting switching point of both end positions
- Easy-to-read position indicator
- All components made from corrosion-resistant or protected materials
- Closed, direct mounting
- Pluggable, electrical connections with various plug types
- UL CSA No. 80054905



NM-521-H

5/2-Way NAMUR Control Valve

- 5/2-way NAMUR control valve for double-acting and single-acting rotary actuators
- Piston slide valve with differential piston (air spring)
- Flange according to NAMUR, at 2 and 4 G 1/4", at 1, 3 and 5
- Standard and Explosion Proof (EEx m II T4) Versions
- Voltages: 230 VAC & 24 VDC
- Manual override
- Operating pressure: 1,5 to 10 bar
- Temperature range: Standard -20 °C to +70 °C / Explosion Proof -10 °C to +50 °C

