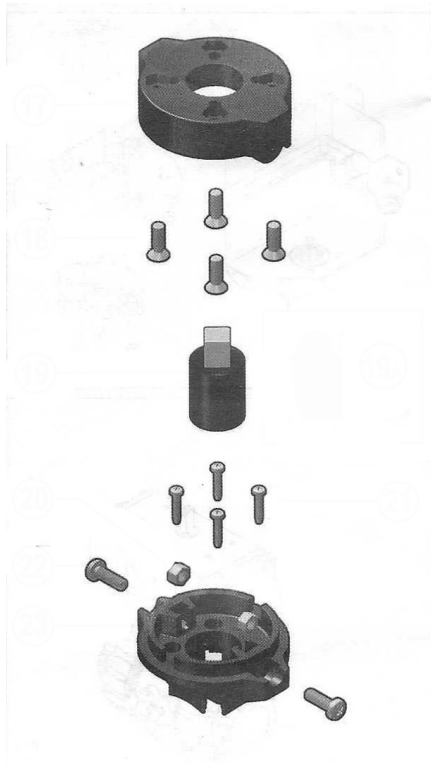
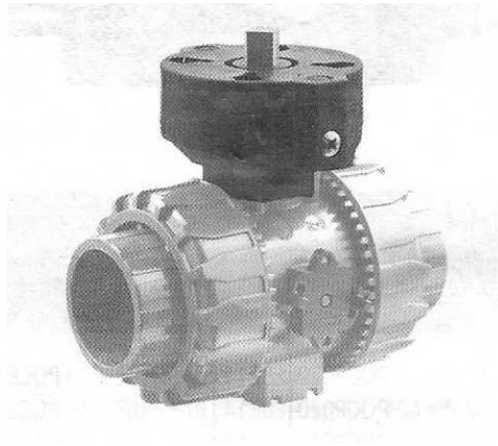


> Mounting Instructions

Mounting Actuator Pad for Thermal Plastic Ball Valves



Parts List

- | | |
|-----------|------------------------------|
| 1 | Insert |
| 2 | Handle |
| 3 | Stem O-ring |
| 4 | Stem |
| 5 | Ball seat |
| 6 | Ball |
| 7 | Body |
| 8 | Support O-ring for ball seat |
| 9 | Radial seal O-ring |
| 10 | Socket seal O-ring |
| 11 | Support for ball seat |
| 12 | End connector |
| 13 | Union nut |
| 16 | Dual Block |
| 17 | Upper plate |
| 18 | Screw |
| 19 | Coupling spindle |
| 20 | Nut |
| 21 | Screw |
| 22 | Screw |
| 23 | Lower Plate |
| 24 | Electric actuator |
| 25 | Bracketing bush |
| 26 | Distance plate |
| 27 | Screw |

> Mounting Instructions

Mounting Actuator Pad for Thermal Plastic Ball Valves

