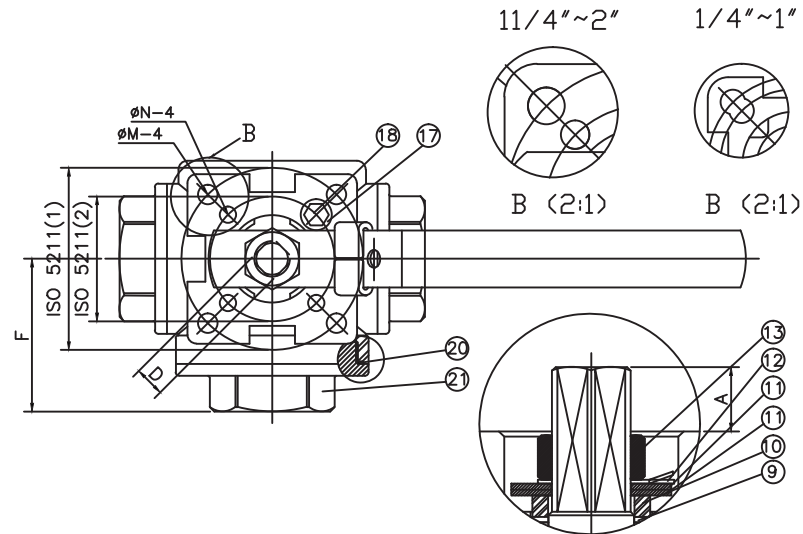
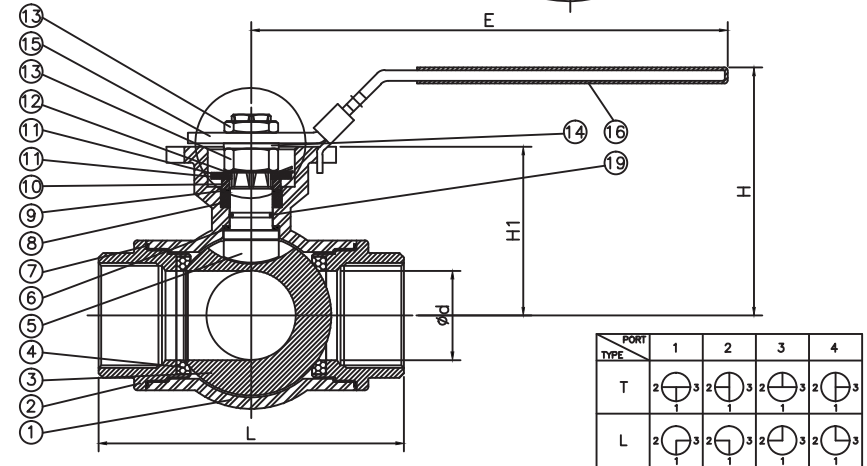


SIZE	d	L	H	D	F	A	N	M	E	H1	ISO 5211		W (Kgf/Cm)
											(1)	(2)	
1/4"	11	75.7	64.9	9	38.3	8.2	6	6	132	36.8	F04 42	F03 36	33
3/8"	11	75.7	64.9	9	38.3	8.2	6	6	132	36.8	F04 42	F03 36	33
1/2"	16	86.6	71.6	9	44.7	9.0	6	6	132	44.1	F04 42	F03 36	50
3/4"	20	103	94.3	11	50.8	11.5	6	7	180	55.1	F05 50	F04 42	90
1"	25	118.2	100	11	57.7	11.5	6	7	180	60.7	F05 50	F04 42	170
1 1/4"	32	125.8	115.7	14	62.6	15.1	7	9	225	75.2	F07 70	F05 50	220
1 1/2"	38	149	124.9	14	74.3	15.1	7	9	225	84.4	F07 70	F05 50	380
2"	50	171.2	139	17	85.6	18	9	11	267	94.6	F10 102	F07 70	600

REVISION	DESCRIPTION	DATE	APPROVED
A	Initial Release	4/16/19	CWL



NO	DRAW NO	PART NAME	MATERIAL	QTY
1	01	BODY	ASTM A351 Gr.CF8M	1
2	02	CAP	ASTM A351 Gr.CF8M	2
3	03	BALL	ASTM A351 Gr.CF8M	1
4	04	BALL SEATS	PTFE	4/1 SETS
5	05	STEM	S.S.316	1
6	06	THRUST WASHER	PTFE	1
7	07	END SEALS	PTFE	2/1 SETS
8	08	STEM PACKING	PTFE	1 SETS
9	09	THRUST WASHER	TFM1600	1
10	10	GLAND BUSH	S.S.304	1
11	11	BELLEVILLE WASAER	SUS304-CSP	2
12	12	STOP	S.S.304	1
13	13	HANDLE NUT	S.S.304	2
14	14	WASHER	S.S.304	1
15	15	HANDLE	S.S.304	1
16	16	HANDLE SLEEVE	VINYL GRIP	1
17	17	STOPPER	S.S.304	1
18	18	SCREN	S.S.304	1
19	19	O-RING	VITON	1
20	20	END SEALS	PTFE	1
21	21	CAP	ASTM A351 Gr.CF8M	1



**APPROVALS** \_\_\_\_\_ **DATE** \_\_\_\_\_  
**DRAWN** CML 4/16/19  
**CHECKED** CWL 4/16/19  
**MATERIAL**  
 Stainless  
**FINISH** Standard Machine Finish  
 UNLESS OTHERWISE SPECIFIED  
 DIMENSIONS ARE IN MILLIMETERS  
 DECIMALS \_\_\_\_\_ ANGLES \_\_\_\_\_  
 X.X=+/- .025" +/- 5 degrees  
 X.XX=+/- .010"  
 X.XXX=+/- .002"

**CR-TEC Engineering Inc.**  
 15 Orchard Park Road ~ Unit 18 - Madison, CT 06443  
 Phone (203) 318-9500 - www.crtec.com  


---

**CRS723F 3-Way Ball Valve**  
**Full Port Direct Mount**  
 SCALE: None

PROPRIETARY ITEM of CR-TEC Engineering Inc. Do not copy drawing or transfer to others without express permission from CR-TEC Engineering Inc..